

---

KEMPSFORD WITH WHELDFORD, THE  
MEYSEYS AND CASTLE EATON

# *Benefice Profile*

IN THE SOUTH COTSWOLD TEAM MINISTRY

---

---

# A Cotswold Benefice



## Three Parishes

with 5 churches caring for the communities of Kempford with Whelford, Meysey Hampton, Marston Meysey and Castle Eaton.

## Team Ministry

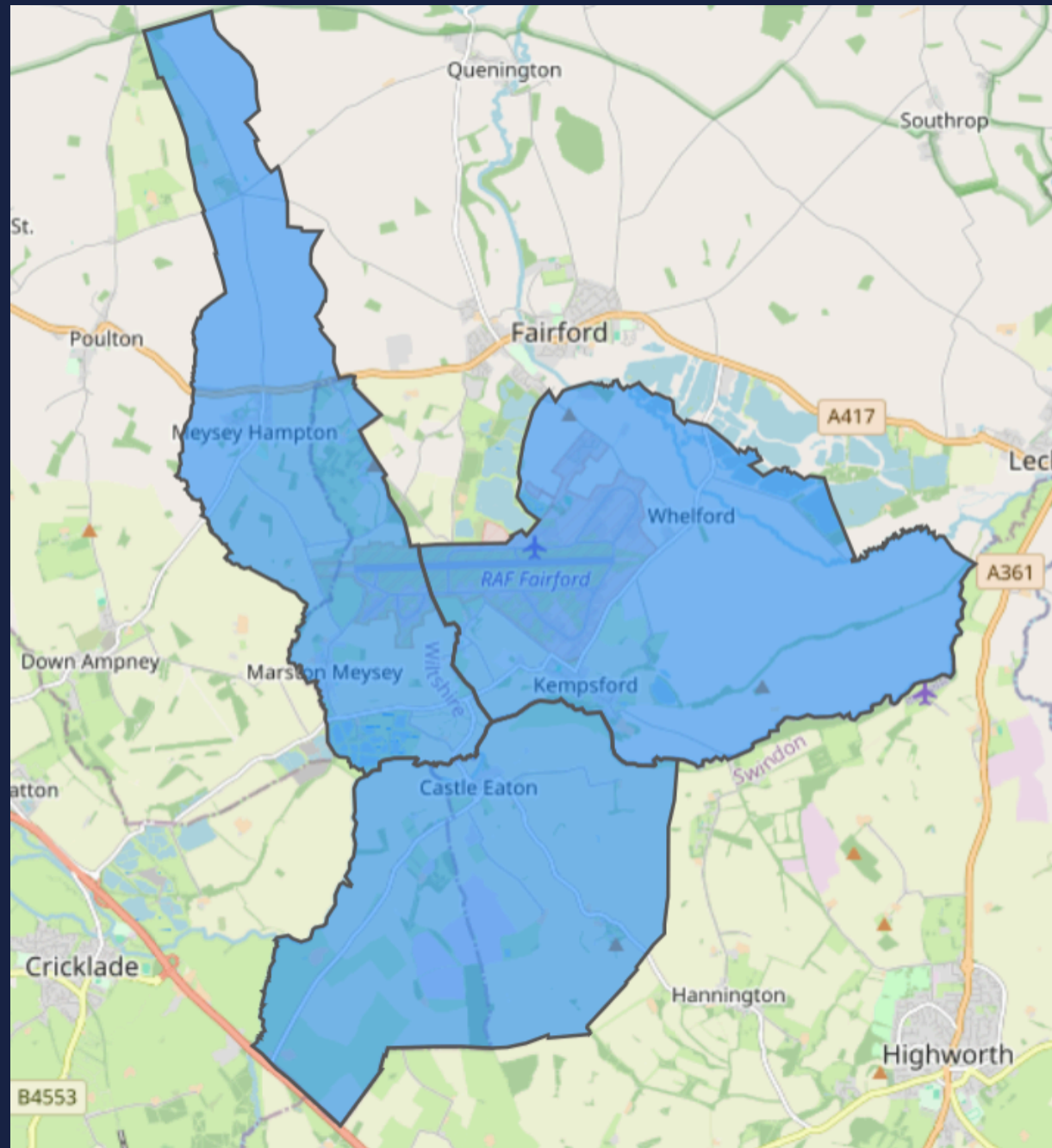
part of the South Cotswold Team Ministry serving 15 parishes across the South Cotswold area.

## One Vision

we want to enhance our outreach to children and families, deepen the sense of community belonging among parishioners, and ensure that the church remains a place of refuge, faith, and service for all ages

---

# About Us



## The Benefice

You will find a warm welcome across the generations and a real sense of community nurtured through church and village activities in all five of our villages: Kempford, Whelford, Meysey Hampton, Marston Meysey and Castle Eaton.

The three Parishes are part of the South Cotswolds Team Ministry. The Team comprises some 15 parishes and 22 churches. Our current priest is part of this large, collaborative and supportive team. Together, we are exploring and developing sustainable expressions of church in rural communities, whilst honouring our history and traditions. A key part of this involves placing our schools at the centre of our mission, as younger generations mature in this ever changing and challenging world.

# *About Us*

## Children, Youth & Schools

We would be thrilled if you brought a passion and a gifting in children, families and youth ministry. It is our hope and prayer that the new appointment for the three Parishes will take a lead across the Team in schools ministry, giving a key proportion of their time to the two schools at Kempford and Meysey Hampton, building on the good work already developed in this vital area. Church in school is an area ripe for further exploration.

You will be supported by our very experienced Team Youth Worker, and a network of volunteers. Our vision for schools and families is built securely on a desire to ensure that those who have little or no connection with Sunday church are given opportunity to learn of the transformative truths of the Gospel and to experience the lived reality of life in all its fullness.



---

# *About Us*



## The South Cotswold Team

The South Cotswolds Team is custodian of a large number of beautiful buildings and the appointment of a Deanery Operations Lead is intended to help us in future proofing our buildings and taking much of the burden of care off the shoulders of clergy and PCC. The DOL will also be a catalyst in reimagining the part our buildings have to play as tangible expressions of faith, and bases for mission and community care. We are also developing a shared administration hub to simplify the practical issues required by weddings, baptisms and funerals and churchyard maintenance, releasing clergy and pastoral teams to focus on other areas.

# About Us



## Benefice Team

You will find 3 able and enthusiastic PCCs and good supportive people with whom to work. You will be supported by our curate Rev'd Catie Watson who, since joining us in July 2023 with her husband Neil, has swiftly become the face and heart of pastoral care and far more in our villages, but is looking forward to a new incumbent joining her. You will find a good community spirit in each of the villages, 5 beautiful church buildings and 2 small C.E. primary schools, at Kempford and Meysey Hampton. Both schools have active church links and are rated 'good' by Ofsted.

To find out more about each parish please see the Appendix document



# *INTRODUCTION*

## *TO THE PARISHES*

This is a full time post with a requirement to live in the Parish of Kempford with Whelford. The Parsonage in Kempford, the largest of our village communities, will become your new home. However, we are very much a supportive group of communities, reflecting the work of our 3 collaborative PCCs. Our able and enthusiastic PCCs are experienced at working together and supporting each other, as well as serving the life of our individual church and village communities. For an initial period, you will be supported by our curate Rev'd Catie Watson. Since joining us in July 2023 with her husband Neil, she has swiftly become the face and heart of spiritual and pastoral care and far more in our villages. Priested in 2024, she is looking forward to welcoming and working alongside our new incumbent. You will find a variety of life and good community spirit in each of the 5 villages: 5 beautiful church buildings and our 2 small, successful C.E. primary schools, at Kempford and Meysey Hampton. Both schools have active church links and were both rated 'good' in their most recent SIAMS inspections. When last 'rated' by Ofsted, they were both judged 'good'. The recent Telegraph survey 2025 voted Meysey Hampton the best primary school in England.

---

# *OUR VISION*

Our vision is to enhance our outreach to children and families, deepen the sense of community belonging among parishioners, and ensure that the church remains a place of refuge, faith, and service for all ages. We want to build thriving, future-proof parishes that continue to serve as a spiritual home for generations to come.

---

---

# *Benefice Vision*

## Community

To deepen the sense of community belonging among parishioners, strengthen our outreach, and ensure that the church remains a place of refuge, faith, and service for all ages. We want to build thriving, future-proof parishes that continue to serve as a spiritual home for generations to come. As 'the 5 Villages' together our focus for the next 5-10 years, is on nurturing vibrant, welcoming, and spiritually enriched communities.

## Young People

Youth engagement will be key, as we look to create more opportunities for children and young adults to reflect, discover and connect with faith through activities, youth groups and community service projects.

Working with schools and the team youth worker to connect with young people and through our schools work we seek to build relationships with the younger members of our communities

## Worship

To continue offering diverse worship styles beyond traditional services, fostering spiritual growth with faith-based events for various age groups.

We want to encourage volunteering.

We want to engender a sense of belonging both amongst our congregations and those who do not come to church.

## Communication

We are improving communication, utilising social media, but we need to do more.

Outreach is crucial to our vision. By strengthening ties with local schools, community organisations and charities, we can expand our reach beyond the church walls, helping to address social needs such as mental health, loneliness, and poverty.

---

# *Schools Ministry*

Schools ministry is central to our church communities. Our curate joined an assembly to explain about the Parish Profile and ask 'How can the church support the community? How can the community/school support the church? What are they looking for in a new vicar? Responses from staff and children included:

- Coming in to be a different voice in assembly / story telling
- School to come to church for services, maybe once a month?
- Vicar to come in to school at break / lunch time to chat with the children and be supportive
- School to help decorate the church
- Be kind, funny, loving & trustworthy and do magic tricks'

## School and church community combined - The Long Table

The school enabled members of the church community to run a village Long Table meal throughout the Autumn and Winter 2022/23 and 23/24, using their hall and kitchen.

Members of our church, with support from external experts and villagers, provided a two-course meal for all ages, meeting social and financial needs in our communities.





## *YOUTH WORKER*

Chris Saunders, South Cotswolds Youth Team Worker supports all the 9 C of E primary schools within the Team. In the smaller schools this takes the form of a regular commitment to support the collective worship programme. In the bigger schools, Chris is able to offer a lunchtime club to Y6s and journey with the pupils through the last year of primary school, working with the teachers to prepare the children for transition to secondary school and covers topics such as resilience, independent thinking and perseverance and making new friends.

In the summer term Chris delivers a class assembly at each of the primary schools, and runs clubs at Farmors Secondary School, in Fairford, providing continuity through fun and games, with discussions, often on values. Chris has a good working relation with Farmors, advertising outings and running a Christmas Hamper programme with the school.

Evening activities include 3 age-appropriate faith discussion groups, which run concurrently on a Tuesday evening. These young people are invited on residential outings and activity days where they are encouraged to explore faith alongside a lively programme of indoor and outdoor activity. On Wednesday evening in Kempsford, Chris leads a Youth Club, with sessions for Y4-6 and Y6-9, supported by people from the village and church. Numbers have grown to around 40, evenly split between the age groups. Activities include craft, games, food, outside play (weather permitting), and a discussion with the older ones as we share hopes, challenges and achievements.

Over recent years he has led an annual trip to Romania in conjunction with Scripture Union.

---

# *SERVICES*

## Sunday Worship

Each Sunday there are upto three Sunday Morning services including Morning Prayer, Holy Communion and BCP Holy Communion. On the 4<sup>th</sup> Sunday every month we celebrate together with a single benefice service. We also offer Forest Church once a month at 4pm.

## Ocassional Offices

Across the benefice we have an average of 5 - 10 Baptisms, Weddings and Funerals a year. Last year we also took 11 Interment of Ashes.



---

# *Team Ministry*

South Cotswold Team Ministry was established in January 2009 and consists of 15 parishes with 22 churches and 6 clergy. It comes under the Deanery of Cirencester. Team services occur at various points in the year. Whilst all the parishes retain their own status, individuality and character, we come together to do things which cannot be done alone or can be done better together with a critical mass or through drawing on different traditions.

We also like having fun together!

The SCTM is served by 4 stipendiary clergy, 2 house for duty clergy, 1 self-supporting minister, 1 Assistant Curate, 1 Licensed Lay Worker (Youth Worker), 2 Young Leaders/Interns, 7 Lay Readers and a number of active retired clergy



# *PERSON PROFILE*

We are looking for somebody who will embrace our warm, engaged, and active communities while walking in the footsteps of Christ.

Our new vicar must be able to connect with all ages and people from all walks of life. Aside from the obvious responsibilities, we are looking for someone who will be a visible presence in the community, engaging with schools and clubs and attending social events. Our emphasis on youth and the added role of Cirencester Deanery Youth and Children's Work Connector calls for somebody who likes, and can connect with, children.

- Growing faith through interactions, activities, services and faith-based events.
- Embracing and using the experience of working with the Deanery to learn and lead us.
- Utilise creativity and imagination to help us grow as a church, as communities and in the unity of the three parishes.





# *PERSON PROFILE*

Communication is going to be key to achieving our vision and guiding us forward. So IT skills and experience in getting the best out of modern communication methods, including social media, will be important. We already have people with many of the skills required, who will work with you, but we need you to be a 'team player' and to lead by example and delegate responsibility in order to deliver our vision. We need help with our growth strategy, not just growing our numbers but using our churches to help our communities and build our finances for thriving, future proof Parishes.

We value, both in ourselves and those we work with, a sense of humour, love of life and a willingness to learn, recognising that we learn from our mistakes. Honesty and a willingness to listen and learn together is important. We also want somebody who is flexible enough to embrace different styles of worship and in other ways of drawing people to the church.

In your work across the 3 Parishes and with the Deanery, bring us faith, leadership, engagement and imagination:

- Growing outreach and faith through interactions, activities, services and faith-based events.
- Embracing and using the experience of working with the Deanery to learn and lead us.
- Utilising creativity and imagination to help us grow as a church, as communities and in the unity of the 3 parishes.

---

# *WHAT WE OFFER YOU*

Team members who get on well together, support each other, have fun along the way and are keen to offer you our full and prayerful support.

- A team with a wide range of experience and skills which we will endeavour to use to assist and support you in your work.
  - An appreciation of honesty and openness to new ideas
- A willingness to listen and learn as together we build faith and communities for the future.

We hope you will consider joining us and leading us forward.

---

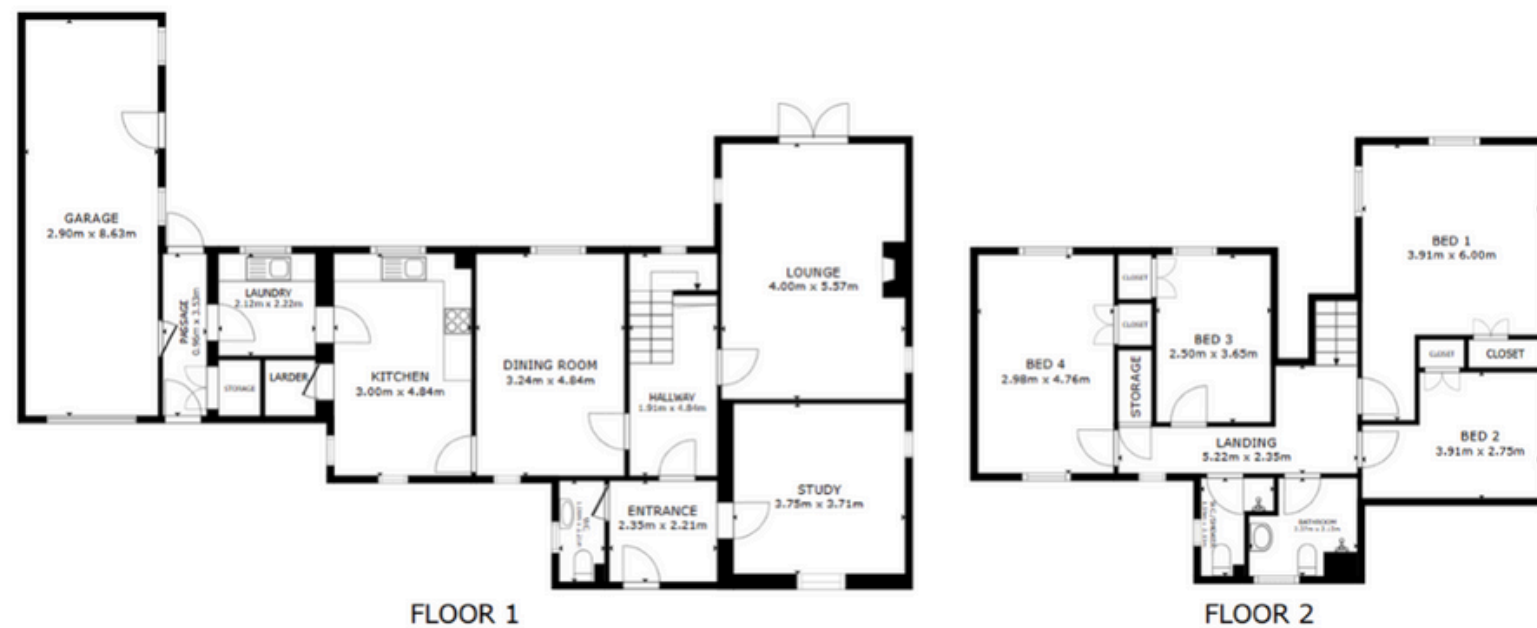


# VICARAGE

*The Parsonage, High Street, Kempford, Fairford,  
Gloucestershire, GL7 4ET*

The Vicarage is an attractive four-bedroom family home is surrounded by a Cotswold stone wall and has a garden at front and a private, enclosed garden to the rear. There is a drive allowing for off-street parking for a number of cars and there is plenty more parking near the church.

It is a good-sized house with good facilities and has been well maintained by the Diocese. Accommodation includes a study/office large enough for pastoral meetings with 2 others.



# DIOCESE OF GLOUCESTER LIFE VISION

“I have come that they may have LIFE, and have it to the full.”  
(John 10:10)

*Life*

We remain committed to our LIFE vision

**Leadership**  
*Committed to transformation*

**imagination**  
*Opening new paths to faith*

**faith**  
*Living as adventurous followers of Jesus Christ*

**engagement**  
*Living out Christ's love and hope*

Nurturing  
everyday  
disciples

Investing in people  
and programmes  
which excite young  
people to explore  
and grow in faith

Encouraging new  
and courageous ways  
of worshipping in  
different places  
which connect with  
more people

Being advocates for  
flourishing through  
initiatives which combat  
injustice, environmental  
destruction, exclusion  
and isolation

Developing  
diverse lay  
and ordained  
leaders

