



**DIOCESE OF  
GLOUCESTER**

# **ASHCHURCH & KEMERTON**

---

**Benefice Profile 2023**  
**Missional Priest-in-Charge**



# INTRODUCTION

## Two Parishes : One vision

We are a partnership of two contrasting parishes who work alongside each other in fellowship to build the Kingdom.



**Pioneer**  
New Housing

**Mixed**  
Ecology

**Supportive**  
Lay Teams



# BENEFICE OVERVIEW

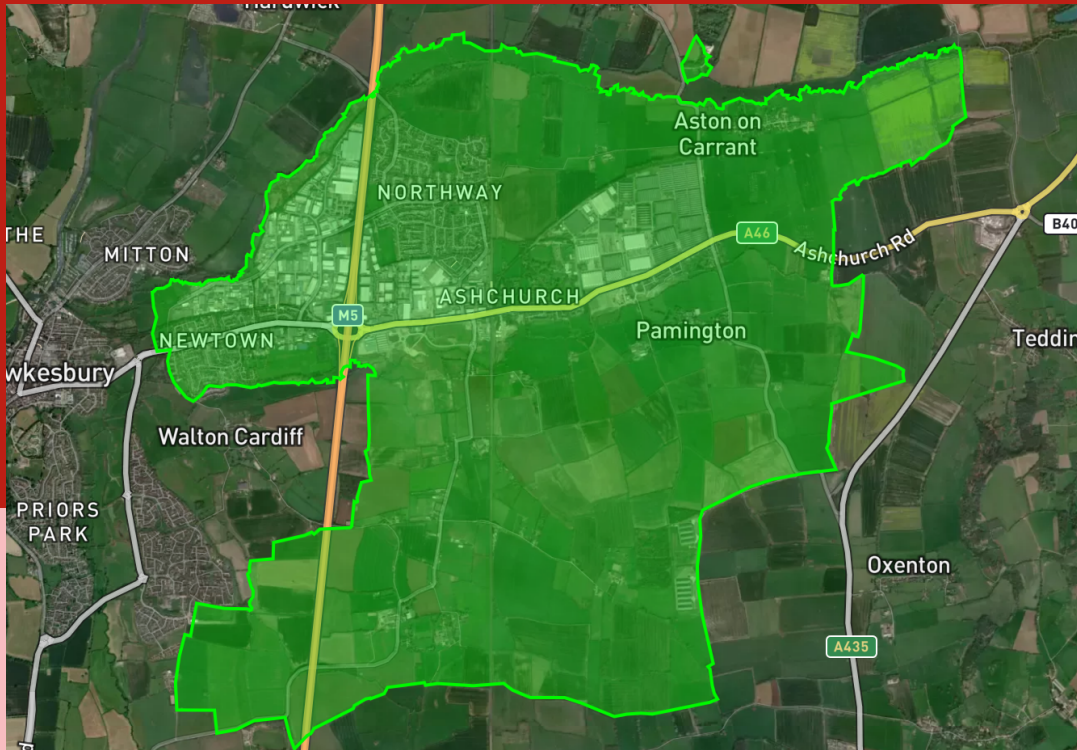
For over 900 years the two parishes of Ashchurch & Kemerton have been a witness to the gospel in their communities.

Now in a period of sustained population growth, we face a new challenge as we seek to respond to the development in Ashchurch and the need to reach new generations across the benefice.



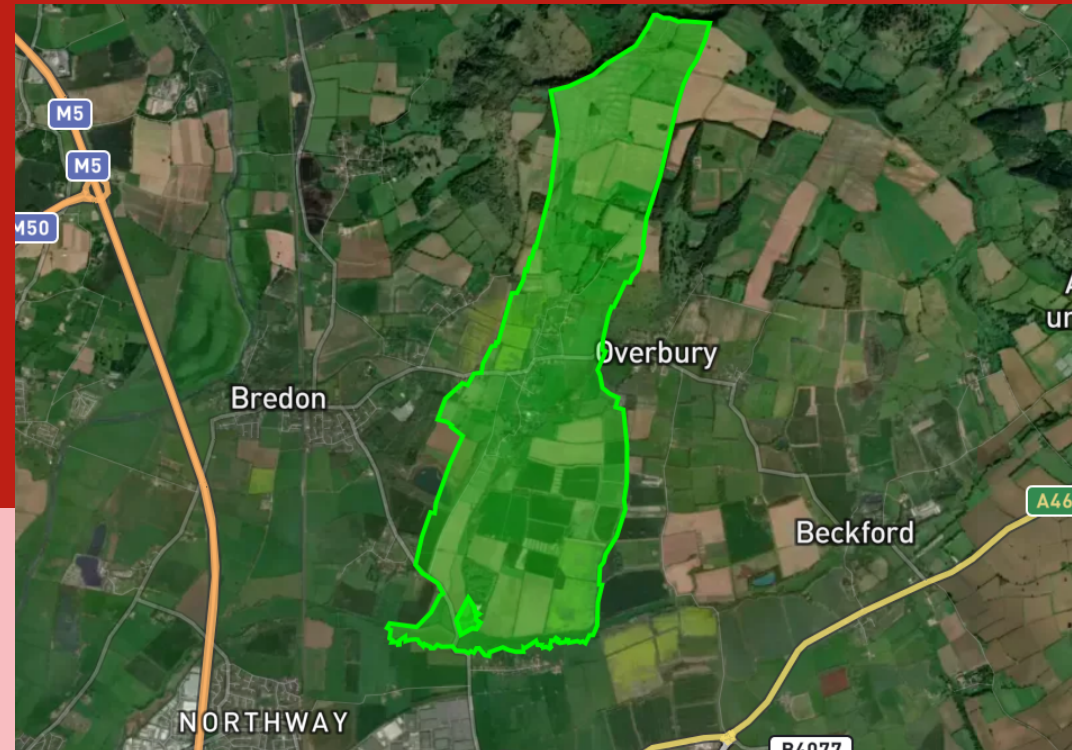


# BENEFICE OVERVIEW



## ASHCHURCH

St Nicholas' serves the communities and hamlets of Aston on Carrant, Newtown, Northway, Fiddington, Pamington & Aston Cross.



## KEMERTON

an active Worcestershire village with an active community. Amenities include a community hall, a popular Roman Catholic Church, a coffee shop and pub.



## GARDEN TOWN

a new housing development of significant size that will affect the whole area, with the majority of the housing in Ashchurch Parish. MoD Ashchurch is also designated for development.





## **Weekly Homegroup**

Open to all in the Benefice a place to explore faith, the bible and issues



## **Quiet Days & Retreats**

An opportunity to go deeper in faith our Lay Reader leads quiet days & retreats and a Lent Course



## **Memory Tree**

Each All Souls and Advent we have a Memory Tree for people to remember loved ones.



## **Churches Together**

We are an active member of CT Tewkesbury and take an active part in *Thy Kingdom Come* events each year

The benefice lies on the east side of Tewkesbury, a rapidly growing town, but also close to the beautiful Cotswolds countryside.

Ashchurch parish is now in the centre of a major development of housing and light industry. In contrast, Kemerton lies within the Cotswold AONB, with tight restrictions on new housing, but still experiences substantial impact from Tewkesbury's growth.

Our two congregations are both enthusiastic to spread the love of God and the Good News of Jesus Christ in our communities. We are very close in style of worship and in collaboration and friendship towards each other, and regularly share each other's services.





Massive increase in housing in Ashchurch Parish, leading to a rapidly expanding mission field



Missing generations from our current communities



Higher pastoral workload and limited resources



Facilities in need of modernisation. Including use of IT & communications, Church Hall and potential reuse of old rectory

# CHALLENGES

We know that we need to reshape ourselves for the challenges ahead, and that the Church of the future in Ashchurch & Kemerton may look very different to today.

We know that we need to invest in both existing communities and founding new ones. We are keen to be partners in mission, led by the new priest as we explore together how to be Church to ever-changing communities.



# KEMERTON



## ACTIVITY & OUTREACH

Shared village events including Good Friday procession of witness, Kemerton Nativity re-enactment.  
Links to local churches in Worcestershire



## HOPES

We would like to explore how to reach the younger generations of our village in new ways as well as offer different forms of worship.



## WORSHIP

Kemerton meets for worship three Sundays a month, joining with the benefice worship on the fourth Sunday. We use Common Worship Order One



# ASHCHURCH



## ACTIVITY & OUTREACH

Little Fishes, Open the Book & iSingPop, Community Events Sunday School & Mothers Union. A small active choir and bellringers.



## HOPES

We want to respond to the significant expansion of our parish with new ways of reaching people with the love of Jesus



## WORSHIP

We meet for worship each week and have a pattern of worship that includes communion and family services



# HELPING OTHERS

## Pastoral Ministry

- A life cycle ministry of Baptisms, Weddings and Funerals supported by our Lay Reader and we are currently exploring the Gloucestershire Funeral Scheme
- Regular Care Home Services
- Eco Church
- Christian Aid Week and mission support
- Churches Together Summer Club in Northway & Sportily Events.



# CHILDREN and Families Ministry

We run a regular pre-school group called Little Fishes in Ashchurch which attracts pre-school children and their carers. We've been delighted that this has connected with families in the new housing. We also have a small number of families that are part of our regular worship and engage in our Sunday School and Family Services.

We also host iSingPOP and Baby & Toddler Music Groups and have an active Mothers' Union.







# CHILDREN

## Schools Ministry

We are passionate about our commitment to our local schools and have an excellent relationship with the children and teachers. We regularly take Open the Book into the Schools, lead Collective Worship and also welcome the children to church for special services and 'Experience...' days themed around major festivals.

**Open**  
the Book

**Experience...**  
Christmas, Easter & more





## **A Pioneer**

Excited about the significant mission opportunities



## **A Pastor**

To help us facilitate our existing and varied patterns of worship.



## **A Team Leader**

To help us train teams to lead mission and ministry



## **An Enabler**

Help us to serve God in our parishes

# PERSON PROFILE

A missional priest-in-charge who will encourage us to continue to spread the love of Christ, whilst inspiring us and taking us in new directions and who has a genuine mission to see old and young in our parishes come to a living faith in Christ, while leading those of us already on our Christian journey into new and exciting ventures.

Someone who will work well with our strong community of lay people, some licensed and trained, who are keen to continue to take forward our ministry and who will recognise an urgent need to build up our congregations and will help us develop our worship in appropriate but innovative ways.



# MISSIONAL

A significant part of this role is to lead us in pioneering new ways of reaching our community and opportunities for planting new expressions of Church

# PRIEST

We recognise that this new direction for our parishes means that we need to offer support and active development of lay ministry within our existing communities



## Lay Ministry

We are keen to develop lay ministry and teams to support both traditional and new forms of worship



## Ordained Ministry

Some of the clergy who've supported us during vacancy are happy to continue to be part of our worship



## Administration

We hope to be able to appoint a part-time administrator to help bear the load of the incumbent

# ROLE DESCRIPTION

## Missional Priest-in-Charge

We are seeking a missionally focused priest with a passion for building new communities.

Over the next 10 years we are expecting a significant amount of building in the Ashchurch Area as the Tewkesbury Garden Town vision becomes a reality.

The role of the missional priest is to be the catalyst to reshape the Churches in Ashchurch and Kemerton for the challenges ahead. Both parishes are supportive of the need to change and to meet the challenge of the new housing.

Although the parish of Kemerton is not directly affected by the new housing, they recognise that they too need to reshape for mission and want to be

both partners in the new ministry and to learn skills for reaching their own communities.

Both parishes are keen to help the new priest to focus on the new challenges and want to explore how lay ministry can both support the existing patterns of worship and the future new missional projects and communities. The parishes are also hoping to appoint a Benefice Administrator to help share the daily running of the parishes.

This missional post will suit a priest with a heart to pioneer new communities, explore new ways of being church and a passion for reshaping traditional parish ministry for the 21st century.



## **Desirable skills for this role include:**

- A deep and lively faith in the inclusive love of God, with the enthusiasm to share that with others
- Ability to work with and respect the inherited traditions of church whilst pioneering new Christian communities
- Experience of pioneering Christian community in areas of new housing
- Happy to build positive working relationships with deanery clergy and non-denominational churches in the benefice.
- Able to build on our positive relationships with our local primary schools and other community groups
- An affinity for using digital technology
- An ability to innovate creatively

This is a pioneering post, but we recognise that it also has elements of a mixed-ecology role with a need to support the church communities as they seek to reshape themselves for new forms of mission and ministry. The parishes are keen to enable the new pioneer priest to be able to focus on the building of new communities but also know that there is some work to be done to help them get in shape to support this work and the existing ministry.

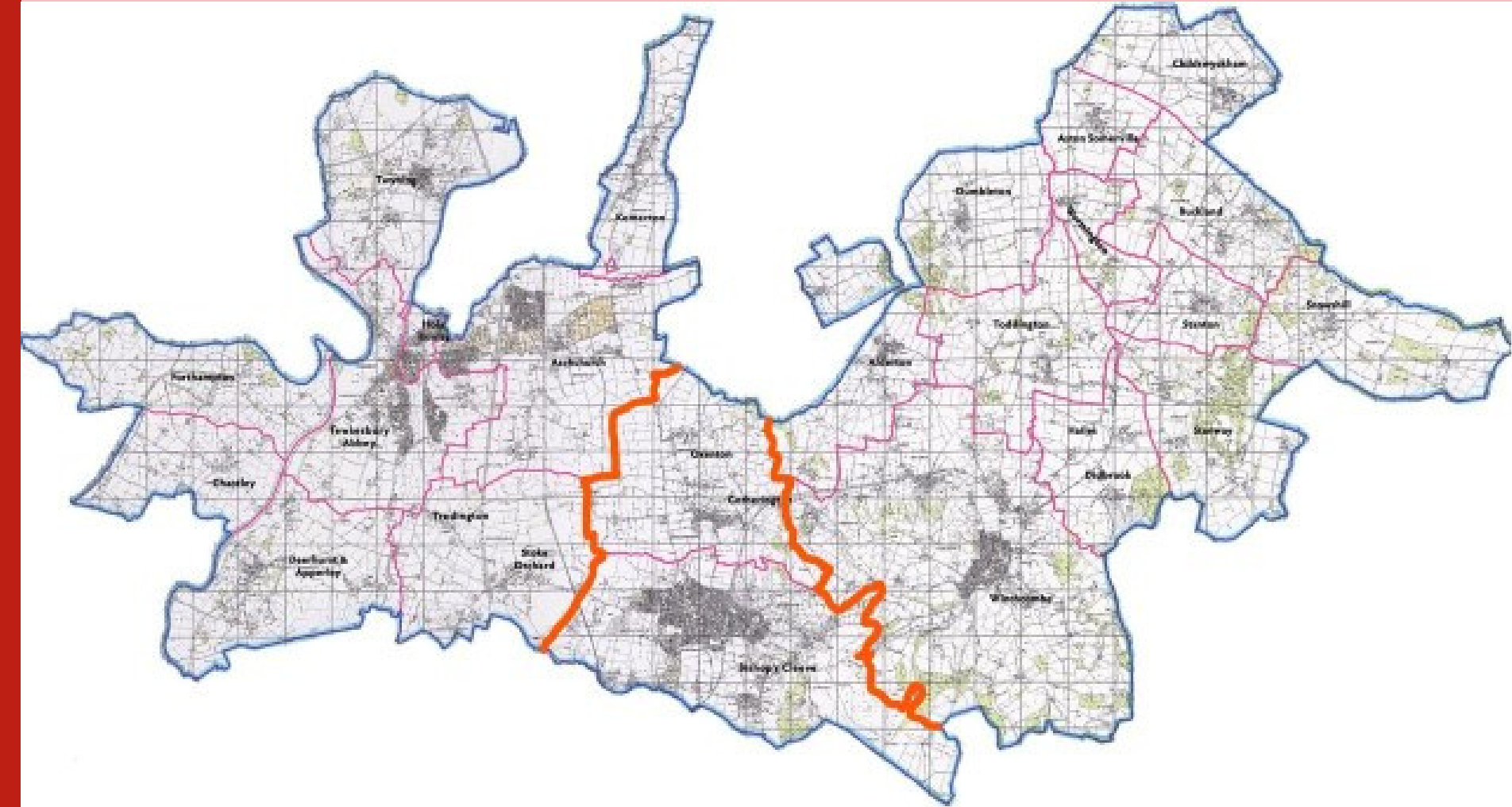
The Lay Reader is keen to support the traditional ministry, as are a number of retired clergy with PTO who have helped during the vacancy; both are happy to continue to contribute to leading worship and pastoral services.

There is also an informal pioneer network including pioneer colleagues elsewhere in the deanery and diocese to offer peer support and friendship.

# Deanery Mission Area

In common with the whole Diocese the Tewkesbury and Winchcombe Deanery have spent the last few years exploring the future of ministry in the deanery through the Deanery Strategic Plans. The Deanery have come up with an innovative response to the challenges they face and are keen to support benefices through localised structures focusing on three distinct geographical areas. The work in Ashchurch is a key part of this plan.

As part of the Deanery Strategic Process the benefice will be in the Tewkesbury Mission Area. The mission areas would encourage collaborative working with the other churches ministers and lay personnel both CofE and ecumenical in the region.





# Garden Town

The proposed development of the east side of Tewkesbury will bring a large number of new residents to Ashchurch Parish. St Nicholas' Church sits in the middle of the proposed development area and we are keen to respond missionally, giving opportunities for people to hear the message of the gospel.

Find out more:

[Civic Society](#) [Borough Council](#)



# VICARAGE

The Vicarage is a newly built house on a new estate in the Pamington area of Ashchurch. It has five bedrooms, two en-suite bathrooms, family bathroom, large kitchen-dining room, utility room and clergy study. There is also a good sized garden and double garage.

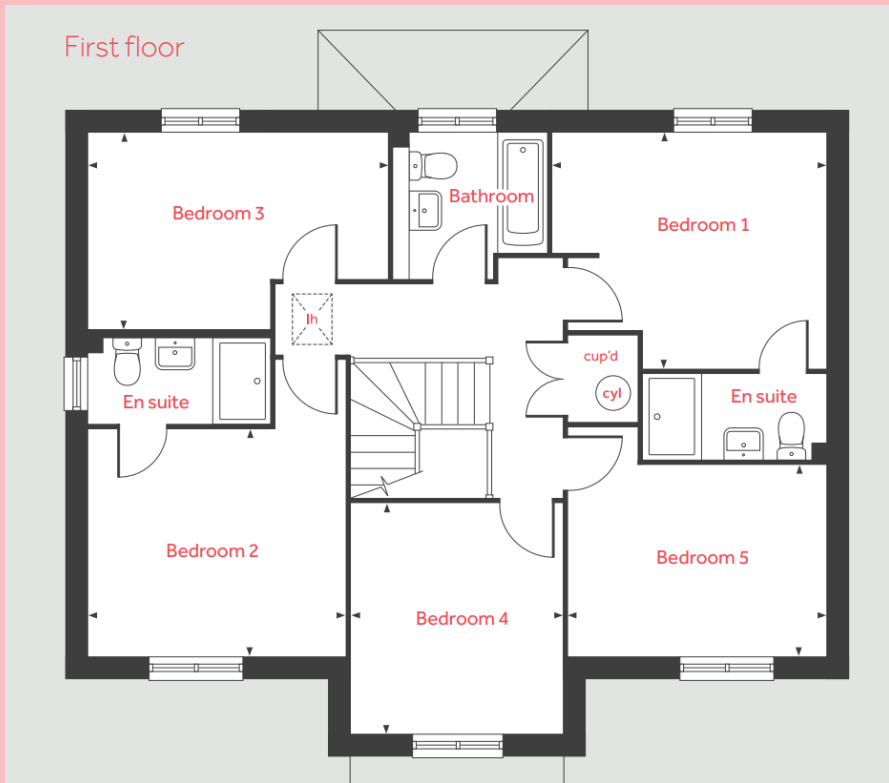
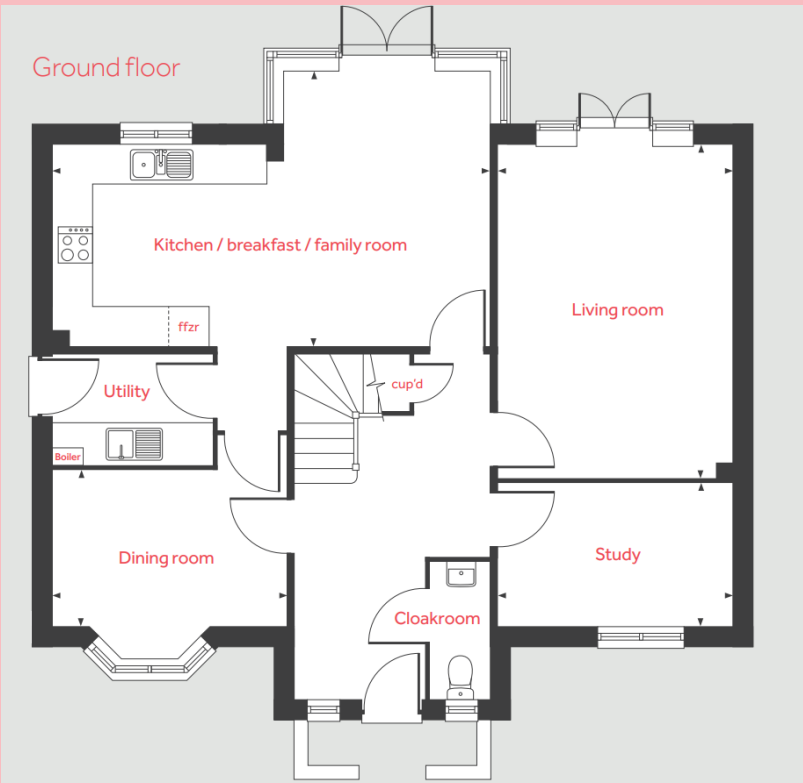
The property is handy for both parishes and is a short drive from local amenities including shops, coffee shop, garden centre and Ashchurch for Tewkesbury Railway Station.

## Location

[10 Willow Close Pamington Tewkesbury GL20 8UZ\\*](#)

\*Map link approximate as new housing still being added to most mapping services





Ground floor		
Kitchen / breakfast / family room		
6.72m x 3.08m	22'0" x 10'1"	
Living room		
5.12m x 3.57m	16'10" x 11'9"	
Dining room		
3.57m x 2.39m	11'9" x 7'10"	
Study		
3.57m x 2.19m	11'9" x 7'2"	
First floor		
Bedroom 1		
3.87m x 3.34m	12'8" x 10'11"	
Bedroom 2		
3.64m x 3.19m	11'11" x 10'6"	
Bedroom 3		
4.24m x 2.79m	13'11" x 9'2"	
Bedroom 4		
3.27m x 2.99m	10'9" x 9'10"	
Bedroom 5		
3.64m x 2.65m	11'11" x 8'8"	
lh	loft hatch	ffzr integrated fridge freezer
cyl	hot water cylinder	◀ ▶ measuring points
cup'd	cupboard	



“I have come that they may  
have LIFE, and have it to the  
full.” - John 10:10



**DIOCESE OF GLOUCESTER**  
**LIFE VISION**





We remain committed to our LIFE vision

We commit to go out and  
share the transforming Gospel  
of Jesus Christ, so that people  
may know life in all its fullness.

*Leadership*

*Committed to transformation*

*imagination*

*Opening new paths to faith*

*faith*

*Living as adventurous followers of Jesus Christ*

*engagement*

*Living out Christ's love and hope*

# *Life*

TOGETHER  
2022

The spotlight is now shining on these  
five LIFE vision commitments:

Nurturing  
everyday  
disciples

Investing in people  
and programmes  
which excite young  
people to explore  
and grow in faith

Encouraging new  
and courageous ways  
of worshipping in  
different places  
which connect with  
more people

Being advocates for  
flourishing through  
initiatives which combat  
injustice, environmental  
destruction, exclusion  
and isolation

Developing  
diverse lay  
and ordained  
leaders